

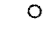

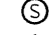
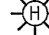

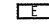
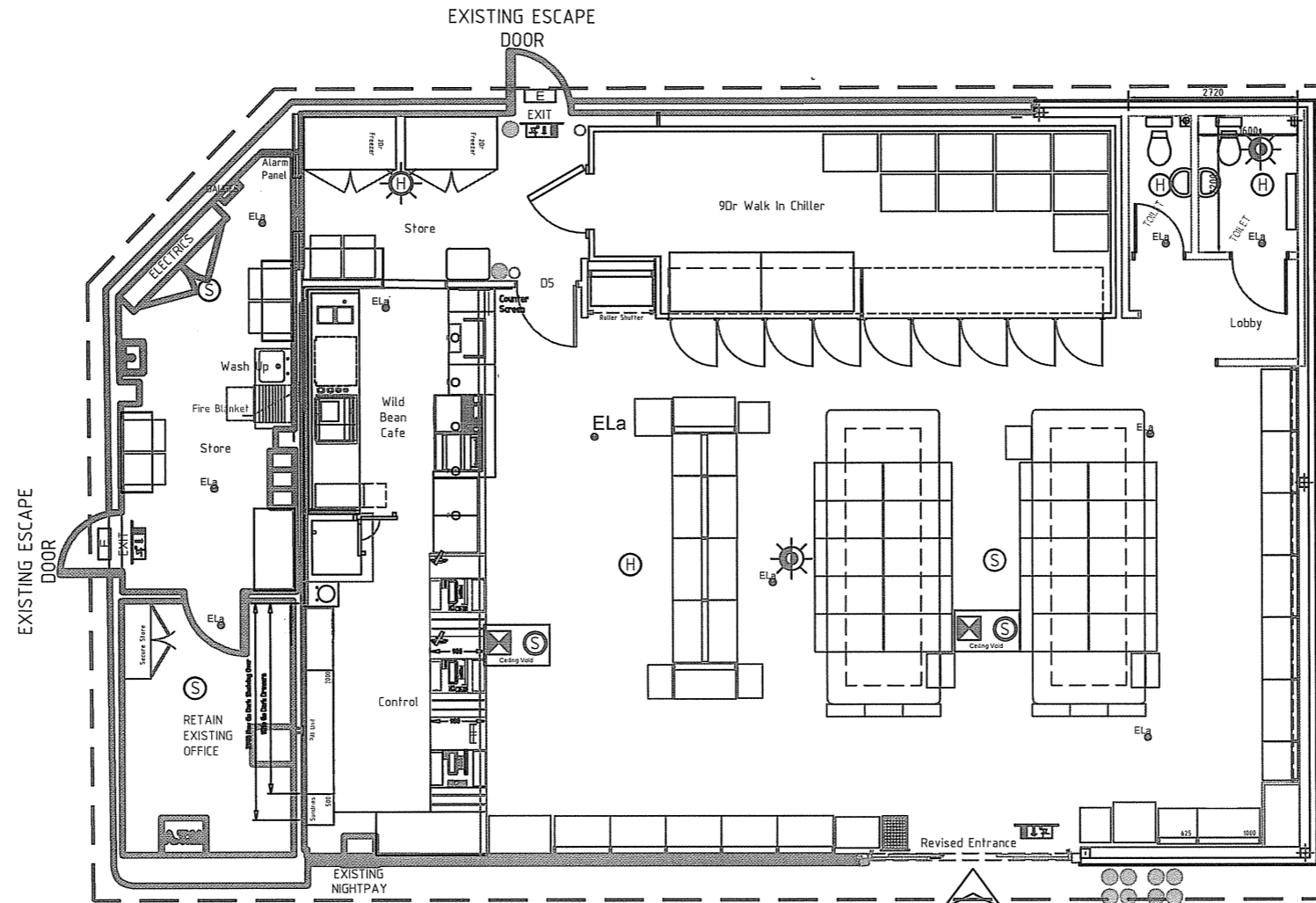


# KEY

-  EMERGENCY LIGHTING
-  POWDER FIRE EXTINGUISHER
-  CO FIRE EXTINGUISHER
-  FIRE BLANKET
-  SMOKE DETECTOR
-  HEAT DETECTOR
-  EMERGENCY INTERNAL EGRESS SIGNAGE
-  EXTERNAL EMERGENCY EGRESS SIGNAGE

The entire store is to be licensed for the sale of alcohol and the provision of late night refreshment



ENTIRE STORE TO BE LICENSED FOR THE SALE OF ALCOHOL AND THE PROVISION OF LATE NIGHT REFRESHMENT


Entrance

4No TROLLEYS EACH COMPRISING OF 2No 9KG DRY POWDER 1NO SAND BUCKET

SHOP LAYOUT  
1:100



SITE O.S. LOCATION MAP 1:1250

NR	DATE	DESCRIPTION
REVISIONS		
STATUS		PLANNING DRAWING
 <b>BP OIL UK Ltd</b> Asset Development		HORNBILL SF CONNECT BAGSHOTT ROAD BRACKNELL BERKSHIRE RG12 0SH
		PREMISES LICENSE APPLICATION LAYOUT
BP OIL UK Ltd Asset Development WITAN GATE HOUSE MILTON KEYNES BUCKS MK9 1ES Tel No 01908 853000 Fax No 01908 853999		DRAWN: M. MERAJI DATE: 08/02/2017 DESIGN CHECKED: DATE: APPROVED: DATE: ATRACK CHECKED: DATE: SCALE: 1:100@A3
DRAWING NUMBER 13028 - 79		REV ARCHITECT: -
<small>SCALED DIMENSIONS SHOULD NOT BE TAKEN FROM THIS DRAWING (APPROPRIATE FOR A3 ONLY)</small>		
<small>This drawing has been produced in accordance with BP Oil UK Ltd retail design standards &amp; current legal requirements. Copyright of BP Oil UK Ltd. Reproduction or use is prohibited. Reproduction only with permission of BP Oil UK Ltd. BP Oil UK Ltd, Asset Development, 200-100 Witton Gate West, Milton Keynes, MK9 1ES</small>		

A3  
ORIGINAL  
PLOT SIZE

ANNEX B